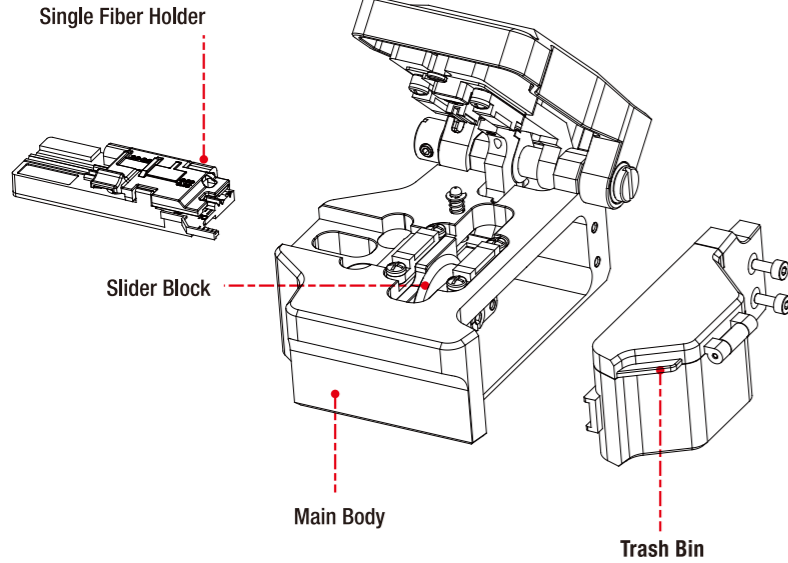


# V1 FIBER CLEAVER

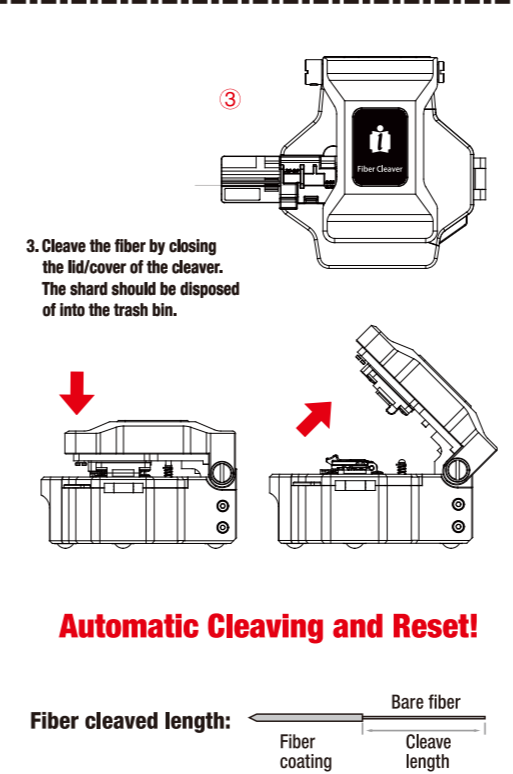
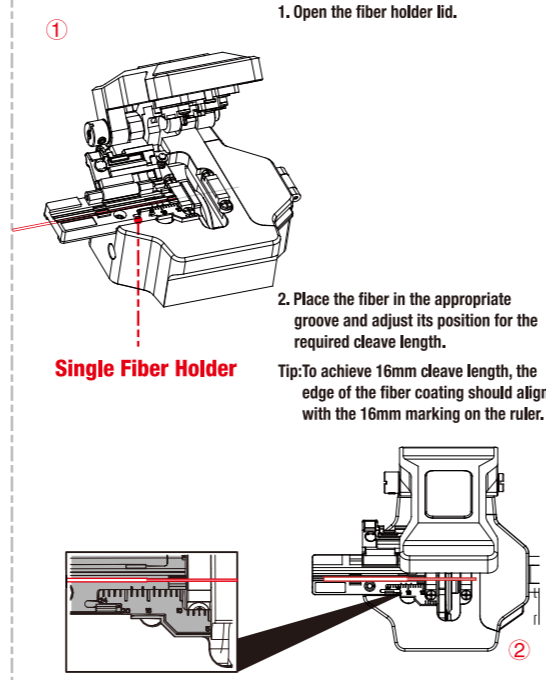


## Operation Manual

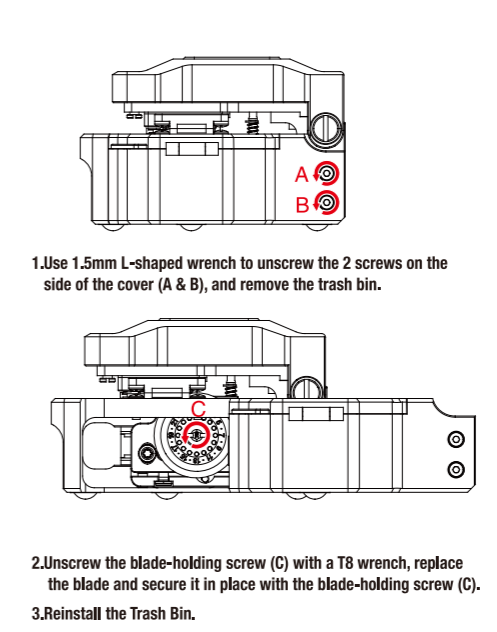
v1.0



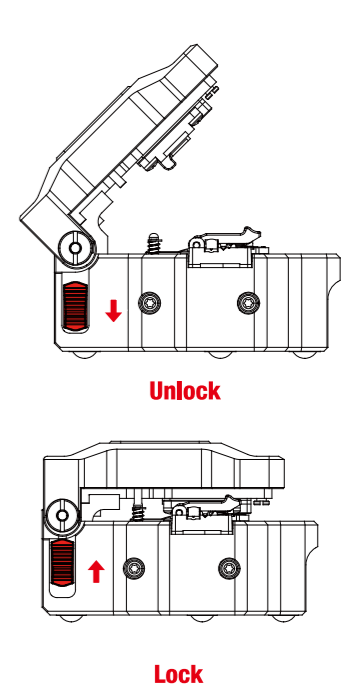
### Operating procedure



### Blade Replacement



### Cleaver Lock



### Safety warnings and precautions

Thank you for choosing V1 Fiber Cleaver. To ensure safe and effective use of this device, it is essential to thoroughly read and understand this manual before operation.

**Important Safety Alert:**  
Failure to adhere to the guidelines in this manual may result in personal injury or damages to the product.

- Precautions:**
- Do Not Disassemble or Lubricate: Attempting to disassemble or apply oil to the main body of the cleaver can lead to product damage.
  - Handle with Care: Dropping or subjecting the cleaver to impact can impair its functionality.
  - Blade Safety: Avoid contact with the blade. Touching the blade can cause injury and may damage the blade.
  - Fiber and Shard Management: Fibers and shards are hazardous. Promptly clean and dispose of any debris to prevent accidents.
  - Disposal of Fiber Debris: Ensure proper disposal of fiber shards. Have the bin ready for safe disposal.
  - Service and Support: In case of any operational issues, cease use immediately and contact the INNO Service Center for assistance.

**INNO INSTRUMENT, Inc.**  
E-22F,30, Songdomirae-ro, Yeonsu-gu, Incheon 21990, Republic of Korea  
Tel : +82-32-837-5600  
Fax : +82-32-837-5601



### Product Specification

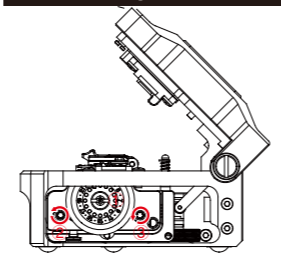
Cladding diameter	125µm
Number of Core	φ0.25 to 0.9mm and 2 to 3mm and drop cable
Cleaved length	5mm~20mm (Coating diameter ≤ 250µm) 10mm~20mm (Coating diameter >250µm)
Dimensions	H: 45.8mm W: 90.7mm D: 72.5 mm
Weight	220g

Cleaver	1
Operation Manual	1
T8, H1.5 wrench	1
Cleaver Case	1
Brush	1

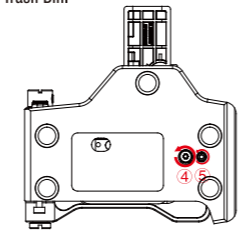
### Optional Accessory

Cleaver Blade	B80
Fiber Holder	CFH-40

### Blade adjustments

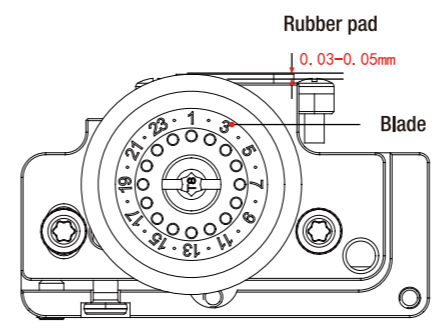


- Blade Position**
- Following the first step of the Blade Replacement procedure (Trash Bin removal), loosen the blade-holding screw (1) with a T8 wrench.
  - Rotate the blade to the next position.
  - Tighten the blade-holding screw (1).
  - Reinstall the Trash Bin.



- Blade Height**
- Following the first step of the Blade Replacement procedure (Trash Bin removal), loosen the side screws (2 & 3), and the locking screw (4).
  - Using the 1.5mm L-shaped wrench, turn the adjustment screw (5). Clockwise to raise the blade, and counter-clockwise to lower it.
  - Tighten the screws (2, 3 & 4).
  - Reinstall the Trash Bin.

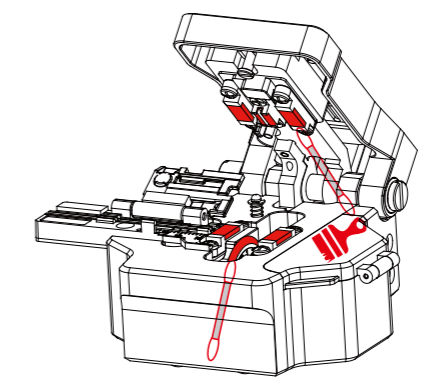
### Blade Height Verification



- Blade Height Position:**  
For optimal results, the top edge of the blade should be within 0.03 - 0.05mm above the rubber pad.

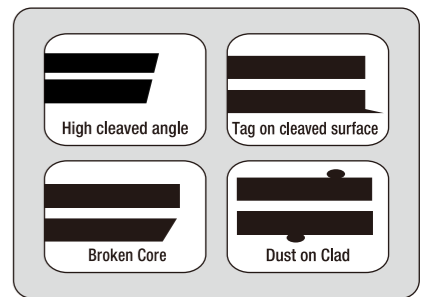
### Maintenance

To ensure stable and consistent operation, the cleaver should be kept free of contamination.  
Using a cotton swap with alcohol (IPA), clean components 1-4.



The grooves of the fiber holder should be free of any debris or residue.

### Troubleshooting



If you encounter cleaving problems, consider these common issues and solutions:

- Fiber Placement:**  
Ensure the fiber is properly and straightly placed.
- Blade Height:**  
Adjust the blade to the correct height.
- Holder/Clamp Dust:**  
Clean any dust from the holder and clamp.
- Fiber Dust:**  
Re-strip and clean the fiber with alcohol.

For further assistance, contact the INNO Service Center.